

# WELCOME TO GOERLICH GROUP OF COMPANY



HEINRICH

[www.heinrich.co.in](http://www.heinrich.co.in)

# Otto Heinrich Warburg

Otto Heinrich Warburg was born in Freiburg im Breisgau in 1883, close to the Swiss border.

Otto's mother was the daughter of a Protestant family of bankers and civil servants from Baden. His father, Emil Warburg, had converted to Protestantism as an adult, although Emil's parents were Orthodox Jews.[4] Emil was a member of the illustrious Warburg family of Altona. Emil was also president of the Physikalische Reichsanstalt, Wirklicher Geheimer Oberregierungsrat (True Senior Privy Counselor).

Otto Warburg studied chemistry under Emil Fischer, and earned his doctorate in chemistry in Berlin in 1906. He then studied under Ludolf von Krehl and earned the degree of doctor of medicine in Heidelberg in 1911



After earning doctorates in chemistry at the University of Berlin (1906) and in medicine at Heidelberg (1911), Warburg became a prominent figure in the institutes of Berlin-Dahlem. He first became known for his work on the metabolism of various types of ova at the Marine Biological Station in Naples. His Nobel Prize in 1931 was in recognition of his research into respiratory enzymes

By 1932 Warburg had isolated the first of the so-called yellow enzymes, or flavoproteins, which participate in dehydrogenation reactions in cells, and he discovered that these enzymes act in conjunction with a nonprotein component (now called a coenzyme), flavin adenine dinucleotide. In 1935 he discovered that nicotinamide forms part of another coenzyme, now called nicotinamide adenine dinucleotide, which is also involved in biological dehydrogenations.

# Study

While working at the Marine Biological Station, Warburg performed research on oxygen consumption in sea urchin eggs after fertilization and showed that upon fertilization the rate of respiration increases as much as sixfold. His experiments also showed that iron is essential for the development of the larval stage.

In 1918, Warburg was appointed professor at the Kaiser Wilhelm Institute for Biology in Berlin-Dahlem (part of the Kaiser-Wilhelm-Gesellschaft). By 1931 he was named director of the Kaiser Wilhelm Institute for Cell Physiology, which had been founded the previous year by a donation of the Rockefeller Foundation to the Kaiser Wilhelm Gesellschaft (since renamed the Max Planck Society).

Warburg investigated the metabolism of tumors and the respiration of cells, particularly cancer cells, and in 1931 was awarded the Nobel Prize in Physiology for his "discovery of the

# Nobel Prize (1931)

While working at the Marine Biological Station, Warburg performed research on oxygen consumption in sea urchin eggs after fertilization and showed that upon fertilization the rate of respiration increases as much as six fold. His experiments also showed that iron is essential for the development of the larval stage.

In 1918, Warburg was appointed professor at the Kaiser Wilhelm Institute for Biology in Berlin-Dahlem (part of the Kaiser-Wilhelm-Gesellschaft). By 1931 he was named director of the Kaiser Wilhelm Institute for Cell Physiology, which had been founded the previous year by a donation of the Rockefeller Foundation to the Kaiser Wilhelm Gesellschaft (since renamed the Max Planck Society).

Warburg investigated the metabolism of tumors and the respiration of cells, particularly cancer cells, and in 1931 was awarded the Nobel Prize in Physiology for his "discovery of the nature and mode of action of the respiratory enzyme".[1] In particular, he discovered that animal tumors produce large quantities of lactic acid.[6] The award came after receiving 46 nominations over a period of nine years beginning in 1923, 13 of which were submitted in 1931, the year he won the prize.

# Nomination for a second Nobel Prize

In 1944, Warburg was nominated for a second Nobel Prize in Physiology by Albert Szent-Györgyi, for his work on nicotinamide, the mechanism and enzymes involved in fermentation, and the discovery of flavin (in yellow enzymes). Some sources report that he was selected to receive the award that year, but was prevented from receiving it by Adolf Hitler's regime, which had issued a decree in 1937 that forbade Germans from accepting Nobel Prizes. According to the Nobel Foundation, this rumor is not true; although he was considered a worthy candidate, he was not selected for the prize at that time.

Three scientists who worked in Warburg's lab, including Sir Hans Adolf Krebs, went on to win the Nobel Prize in future years. Among other discoveries, Krebs is credited with the identification of the citric acid cycle (or Szentgyörgyi-Krebs cycle).

Warburg's combined work in plant physiology, cell metabolism, and oncology made him an integral figure in the later development of systems biology. He worked with Dean Burk on the quantum yield of photosynthesis.

# Our Packages

MRP	DP	Quantity	GBP	Turn of Matching
3500	2960	1	18	8%
10500	8700	3	54	10%
17500	14500	5	90	12%
31500	26640	9+1 Product gift	162	14%
70000	59200	20+2 Product gift	360	16%

\*term and conditions apply

[www.heinrich.co.in](http://www.heinrich.co.in)

# Different Modes of Bonuses

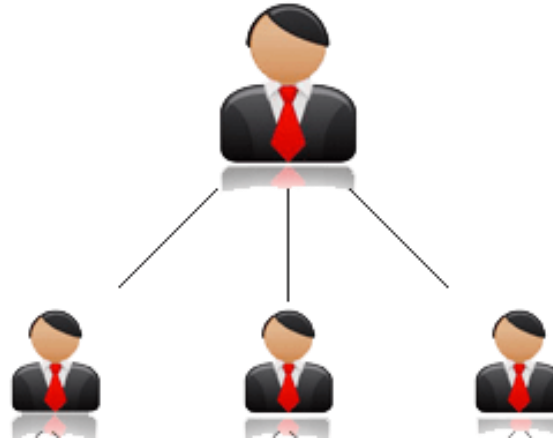




# Retail Bonus

MRP	DP	Retail Profit
3500	2960	540
10500	8700	1800
17500	14500	3000
35000	26640	8360
77000	59200	17800

# Leadership Income

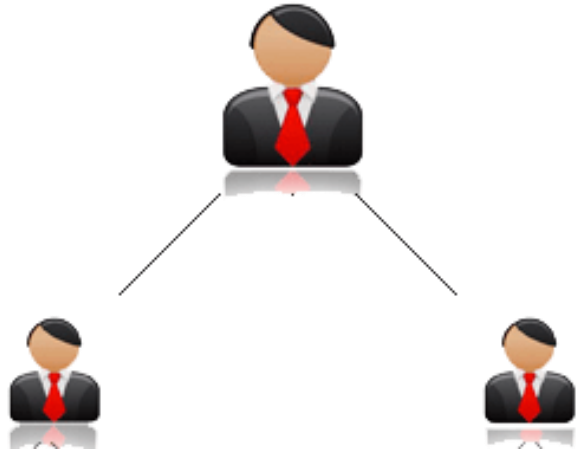


Level	Income
1 <sup>st</sup>	5%
2 <sup>nd</sup>	2%
3 <sup>rd</sup>	1%
4 <sup>th</sup>	1%
5 <sup>th</sup>	1%

Note:-\*You Will Get of Your Team Income

# Team Commission (Turnover Bonus)

DP	Turn of Matching	Income
2960	8%	800
8700	10%	1000
14500	12%	1200
26640	14%	1400
59200	16%	1600



WEEKLY CLOSING (EVERY FRIDAY)

NO ADMIN CHARGE, ONLY TDS 5 % DEDUCTION POWER LEG CARRY FORWARD,  
WEEKLY CAPPING UPTO 30 LAC

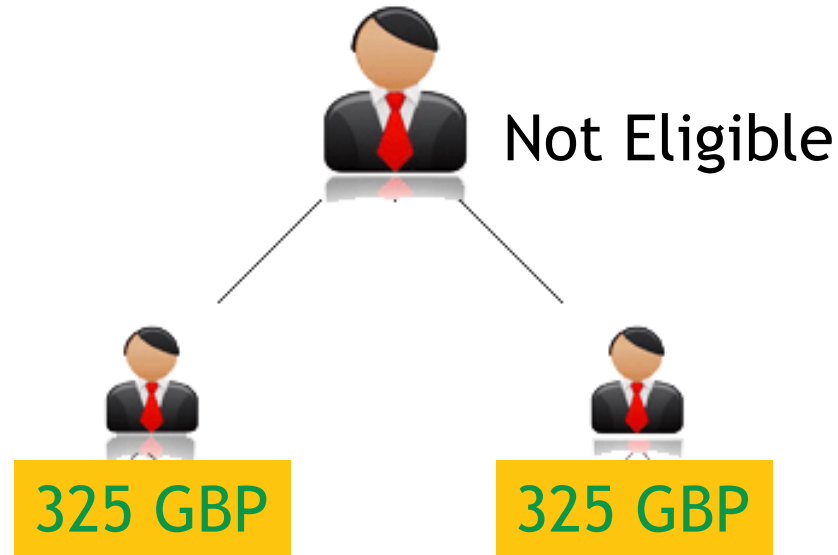
\*term and conditions apply



# Team Development Income

Only Gold 325 GBP rank holders will get this bonus.  
Direct seller will get this bonus when no one has qualified for Gold 325 GBP rank in both the downline (Left & Right).

Gold



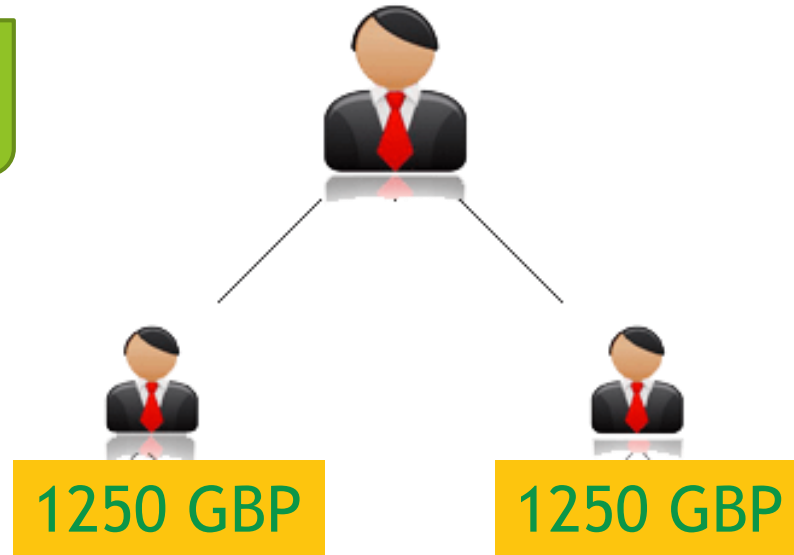
**PAY-OUT : 4500/- APROX**

**+ Product MRP . 3500/-**

**FREE TOTAL INCOME : 7500/- APROX**

# Generation Advancement Bonus

Double Diamond



**10 % GENERATION INCOME**  
**You Will Get 10% of**  
**Your Team Income**



# Ranks

Ranks	Qualification Criteria	Dual Team Turnover Bonus Capping (INR)
Distributor	2 Active Directs (1 Left: 1 Right)	8000
Star	in any one team & 65 GBP business in both team	12,000
Silver	165 GBP in both team	20,000
Gold	325 GBP in both team	25,000
Diamond	650 GBP in both team	30,000

Ranks	Qualification Criteria	Dual Team Turnover Bonus Capping (INR)
Double Diamond	Any 1 team member from your own downline need to be Diamond & 1250 GBP business in both team	50,000
Black Diamond	Any 2 team member from your own downline need to be Double Diamond & 2500 GBP business in both team	1,00,000
Platinum	Any 2 team member from your own downline need to be Black Diamond & 10,000 GBP business in both team	2,50,000

\*term and conditions apply

[www.heinrich.co.in](http://www.heinrich.co.in)



## Ranks

Ranks	Qualification Criteria	Dual Team Turnover Bonus Capping (INR)
Crown	2 Platinum (1 Left & 1 Right) & 25,500 GBP business in both team	3,00,000
Crown Silver	2 Crown (1 Left & 1 Right) & 51,000 GBP business in both team	4,00,000
Crown Gold	2 Crown Silver (1 Left & 1 Right) & 1,00,000 GBP business in both team	5,00,000
Crown Diamond	2 Crown Gold (1 Left & 1 Right) & 1,90,000 GBP business in both team	6,00,000

Ranks	Qualification Criteria	Dual Team Turnover Bonus Capping (INR)
Royal Silver	2 Crown Diamond (1 Left & 1 Right) & 3,20,000 GBP business in both team	7,00,000
Royal Gold	2 Royal Silver (1 Left & 1 Right) & 4,50,000 GBP business in both team	8,00,000
Royal King	4 Royal Gold (2 Left & 2 Right) & 6,40,000 GBP business in both team	9,00,000

\*term and conditions apply

[www.heinrich.co.in](http://www.heinrich.co.in)

## Ranks

Ranks	Qualification Criteria	Dual Team Turnover Bonus Capping (INR)
Ruby	4 Royal King (2 Left & 2 Right) & 8 lakhs GBP business in both team	10,00,000
Ruby Silver	4 Ruby(2 Left & 2 Right) & 11 lakhs GBP business in both team	11,00,000
Ruby Gold	4 Ruby Silver(2 Left & 2 Right) & 13.5 lakhs GBP business in both team	12,00,000

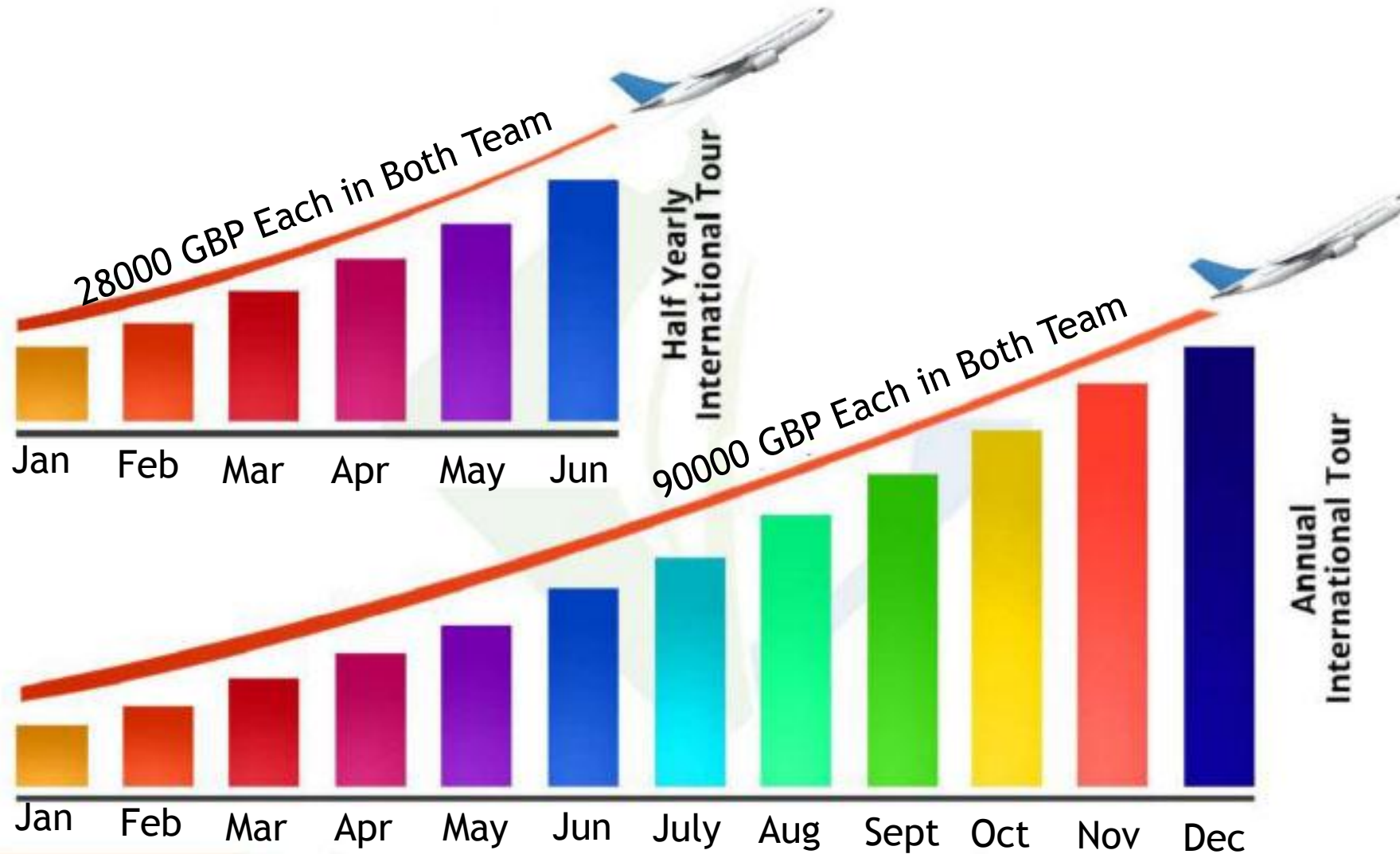
Ranks	Qualification Criteria	Dual Team Turnover Bonus Capping (INR)
Ruby Diamond	6 Ruby Gold (3 Left & 3 Right) & 19 lakhs GBP business in both team	13,00,000
Ruby Double Diamond	6 Ruby Diamond (3 Left & 3 Right) & 32 lakhs GBP business in both team	15,00,000
Ruby Black Diamond	6 Ruby Double Diamond (3 Left & 3 Right) & 64 lakhs GBP business in both team	21,00,000



# Awards & Rewards,

Coming Soon

# Tours & Vacations



\*term and conditions apply



# National Lifetime Achievement

All Direct Sellers who achieves the rank of "Platinum" and above are eligible for this. A fund equivalent to 2% from the total turnover in that particular country will be equally distributed among all, who achieves the eligible rank in that particular year, in that particular country.

\*term and conditions apply



[www.heinrich.co.in](http://www.heinrich.co.in)



# International Lifetime Achievement

All direct sellers who achieves the rank of "Royal Gold" and above are eligible for this.

A fund equivalent to 2% from the total global turnover will be equally distributed among all, who achieves the eligible rank in that particular year.



\*term and conditions apply

[www.heinrich.co.in](http://www.heinrich.co.in)



**HEINRICH**

[www.heinrich.co.in](http://www.heinrich.co.in)



# Thank You!